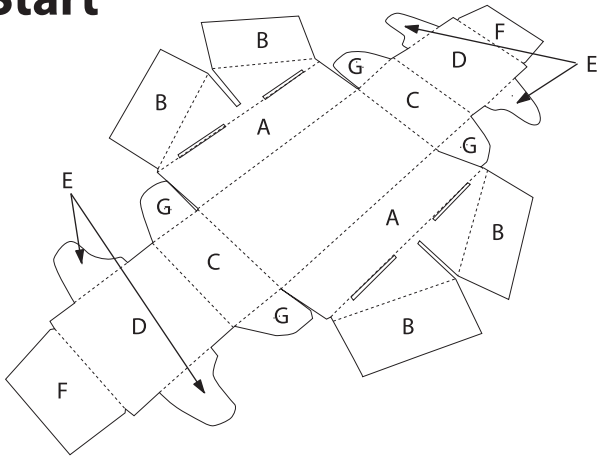


Jumbo Cardboard Blocks Folding Instructions

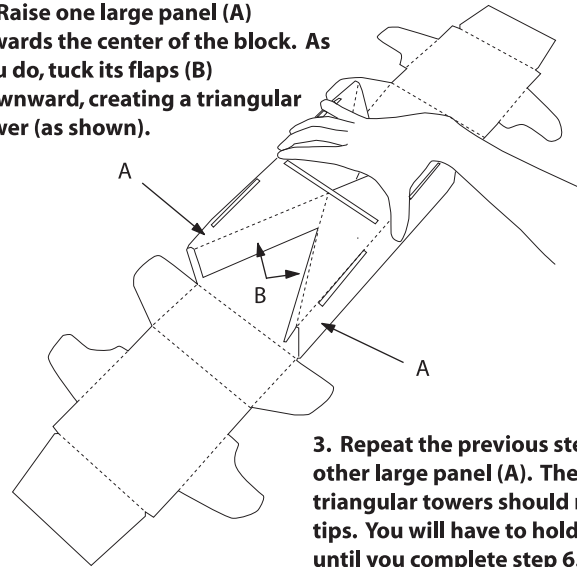
Block Assembly Instructions

Start

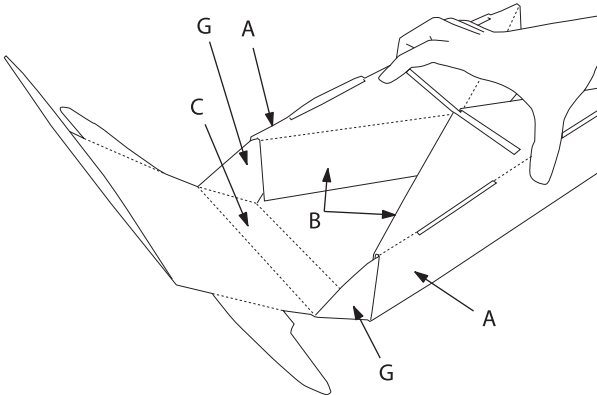


1. Lay the unfolded block out flat, brown side up. Before assembling the block, fold all of the creases slightly inward. (Note: Dotted lines indicate creases in above illustration.)

2. Raise one large panel (A) towards the center of the block. As you do, tuck its flaps (B) downward, creating a triangular tower (as shown).



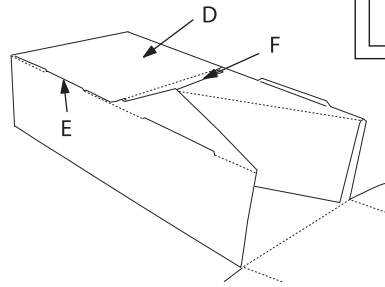
3. Repeat the previous step for the other large panel (A). The two triangular towers should meet at their tips. You will have to hold them in place until you complete step 6.



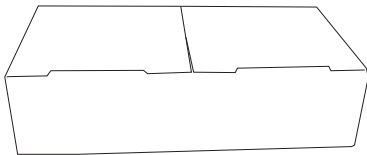
4. Grip the towers together and fold one of the small panels (C) up towards the center of the block. Slide its tabs (G) into the slot between the outside of the block (A) and the internal support (B).

5. Fold the top flap (D) forward and fit its tabs (E & F) into the slots on the top of the towers.

6. Press firmly down on the top flap (D), making sure that the side tabs (E) and its top tab (F) are aligned with their slots.

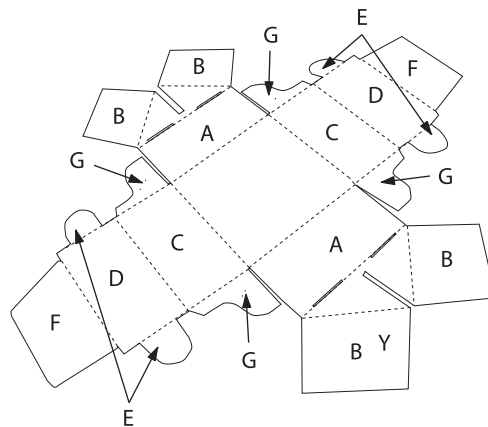


7. Repeat steps 4, 5 & 6 for the other side of the block.

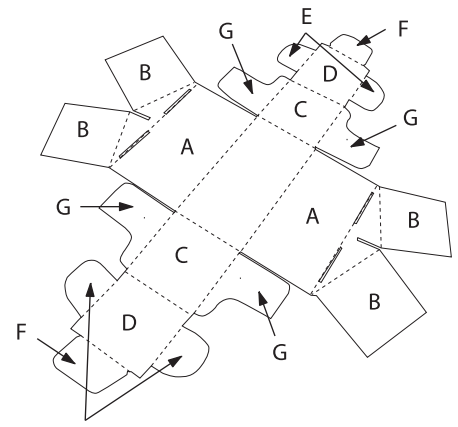


8. Congratulations! You have completed assembly of the block.

Note: While the instructions picture the large red block, the folding steps remain identical for the smaller blue and yellow blocks.



BLUE BLOCK



YELLOW BLOCK