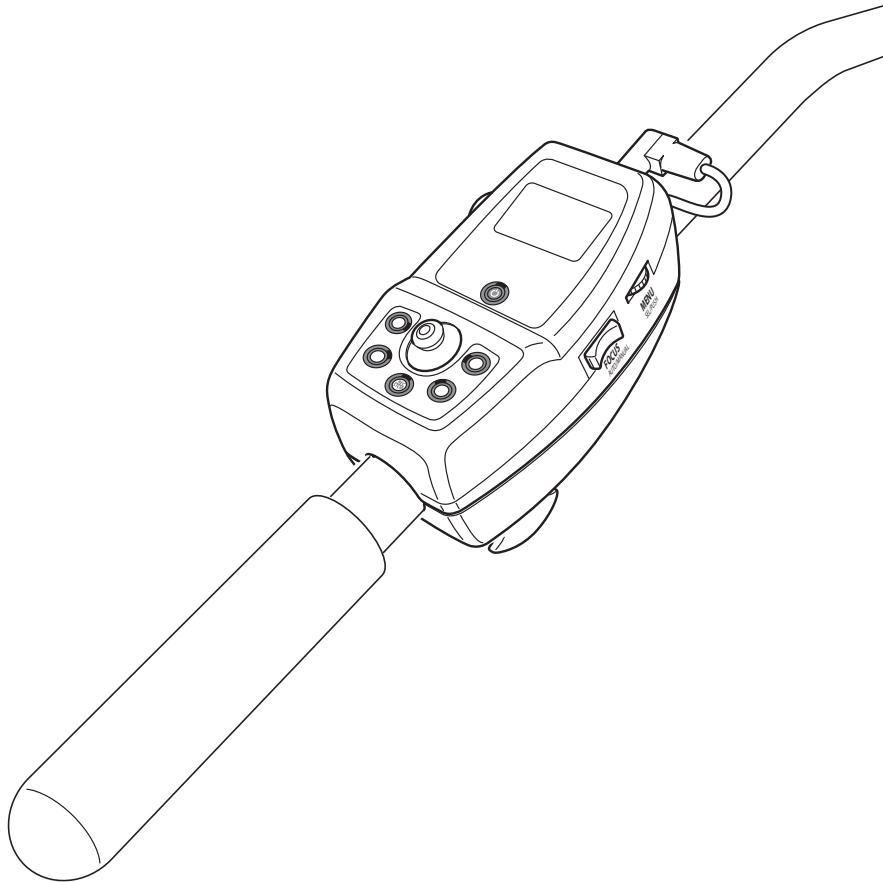




Manfrotto
Imagine More



INSTRUCTIONS

Procedure for update 521LX

System Requirements

Windows XP SP2

Windows Vista

Windows 7

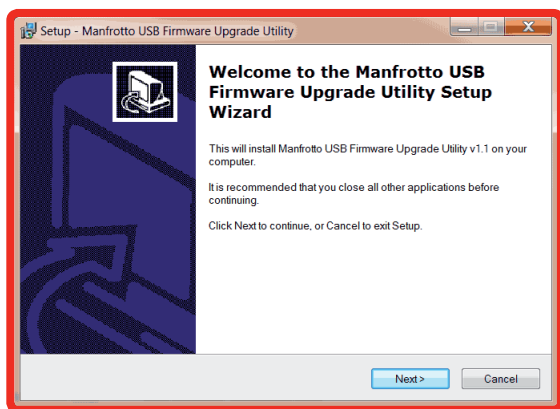
Download

Download from web site www.manfrotto.com :

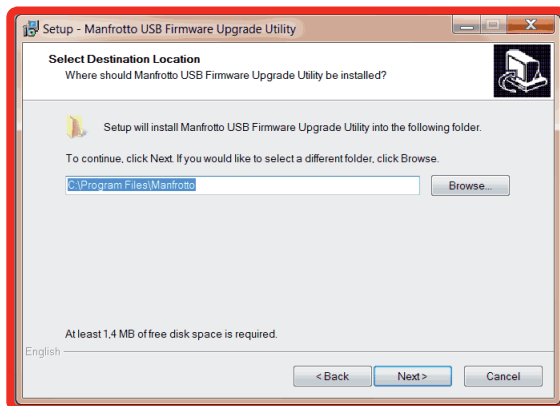
1. “Manfrotto USB Firmware Upgrade Utility Setup” (MFUU-setup)
2. Firmware update “xxx.meff” (xxx depends on the firmware version)

Install MFUU-setup software in your PC :

1. click on  MFUU-setup.exe

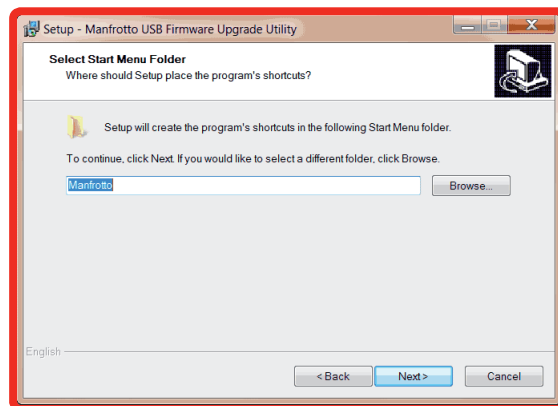


2.

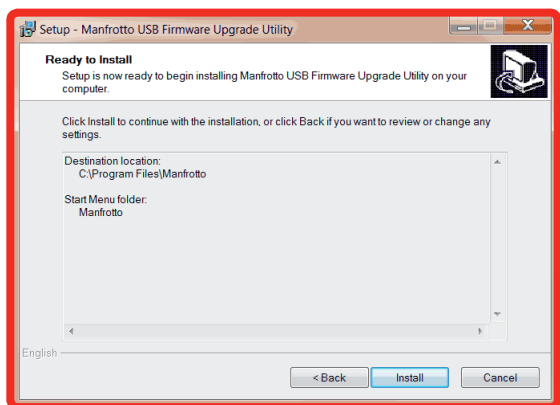


3.

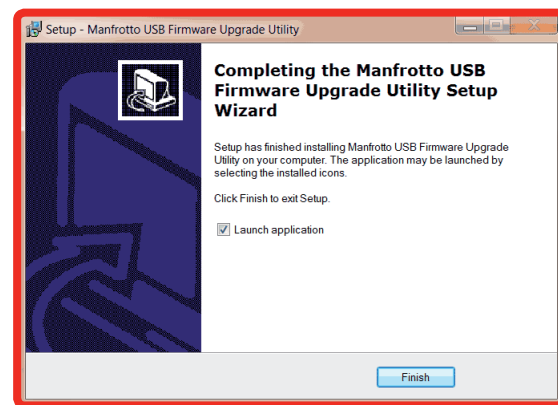
Choose the path and install the software



4.



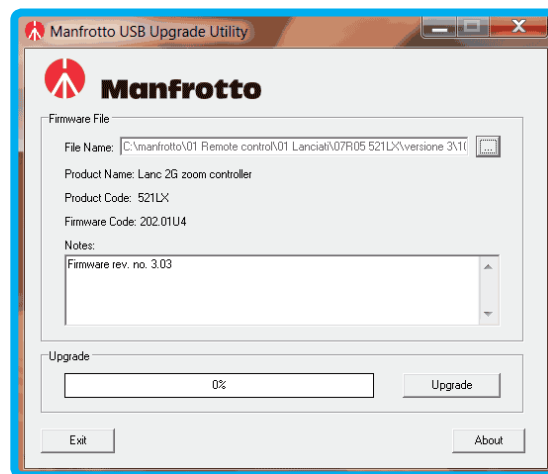
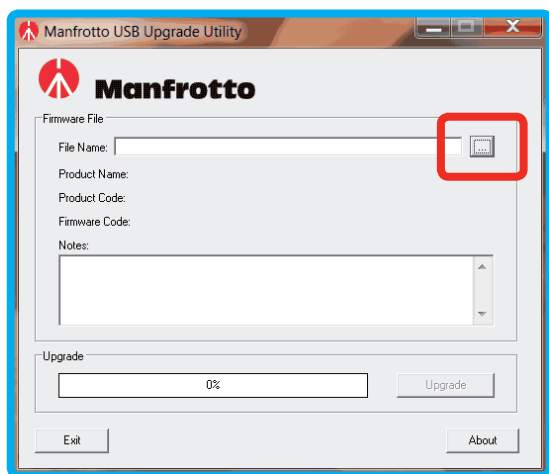
5.



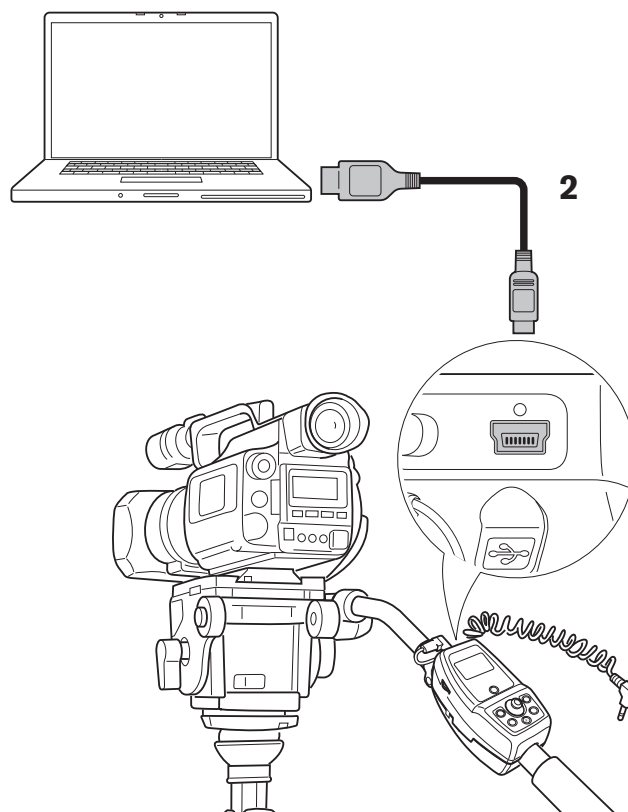
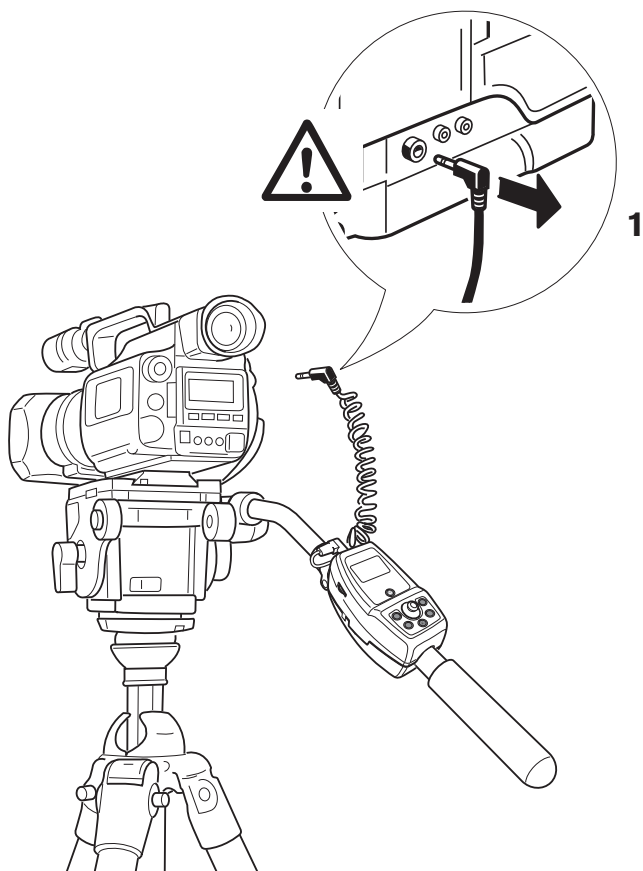
6.

Update 521LX

1. Manfrotto software (MFUU-setup) will start itself after the installation ; if doesn't start automatically select it from Windows start menù
2. Using the proper button (underlined in red below) , select the path where the updating firmware has been saved "xxx.meff"



3. Disconnect Lanc jack from camera- otherwise it will not possible update the firmware and connect PC and 521LX usb with standard mini-usb cable (not included in 521LX package)



4. After the connection with the PC the led ON/OFF begins to blink
5. Select the “Upgrade” button (underlined in red below) and in a few seconds the update will happen
6. The 521LX displays the text “CAMERA IF. NOT ACTIVE” when the download finishes
7. Disconnect the usb cable , 521LX is ready to be used with new firmware

