

# Digital Photo Picture Frame With Built-in Weather Station



## User's Manual



# Important Safety Instructions

**CAUTION:** These servicing instructions are for use by qualified service personnel only. To reduce the risk of electric shock, do not perform any servicing other than that contained in the operating instructions unless you are qualified to do so.

**Note:** Do not touch the color TFT LCD screen by hand directly.

## Proper Handling of the Digital Photo Picture Frame with Built-in Weather Station

Always handle the Digital Photo Picture Frame with Built-in Weather Station carefully. Avoid touching the LCD screen as natural skin oils are very difficult to remove.

Always position the Digital Photo Picture Frame with Built-in Weather Station on a stable and level surface. Unstable surfaces can cause the Digital Photo Picture Frame with Built-in Weather Station to topple and fall, resulting in possible damage or injury.

Avoid exposing the Digital Photo Picture Frame with Built-in Weather Station to direct sunlight or high temperatures, which can damage or shorten its life. Do not place the unit near heat sources such as radiators, heat registers, or other appliances that generate heat. Orient the Digital Picture Frame with Built-in Weather Station away from direct sunlight to reduce glare.

Avoid exposing the Digital Photo Picture Frame with Built-in Weather Station to rain, water, moisture or high humidity. Do not place it in a bathroom or kitchen near a sink or where it may come in contact with water.

Never place heavy or sharp objects on the LCD panel, frame, or power cord.

## Overloading Outlets

Do not overload electrical power sources when using the Digital Picture Frame with Built-in Weather Station. Overloading wall outlets, circuits, or extension cords can result in overheating, fire, or electric shock. Use only grounded or polarized outlets.

## Power Cord Protection

To minimize wear on the power supply cord, the power supply cord should be routed away from foot traffic and contact with other objects. Do not route the power cord under rugs or carpeting. The cord should never be severely bent, pinched, or twisted. Periodically inspect the power cord and each end of the cord for wear or damage. Unplug and replace the cord if it is damaged.

## Ventilation

Slots and openings on the Digital Photo Picture Frame are provided for ventilation purposes. To ensure reliable operation of the product and to protect it from overheating, these openings must not be blocked or covered. Increased temperatures may cause fire or device failure.

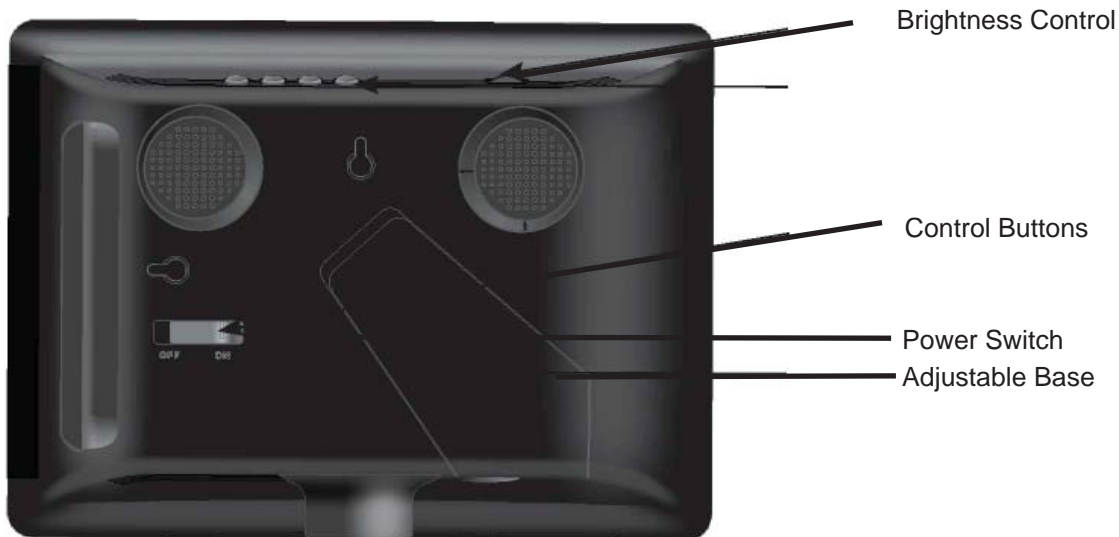
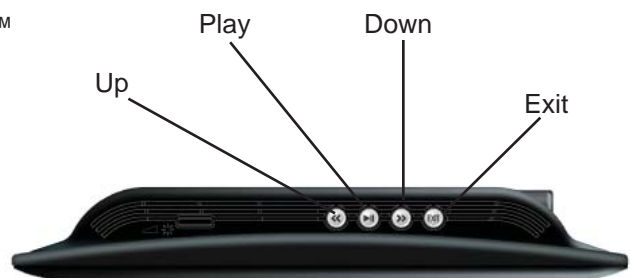
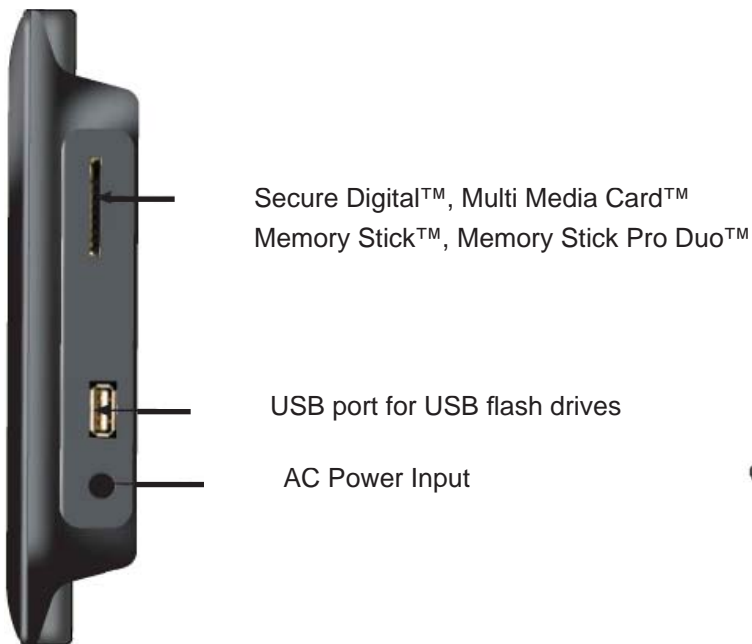
To assure proper ventilation, do not block the openings by placing the Digital Photo Picture Frame on a bed, sofa, rug or other similar surface. Do not place it in an enclosed space such as a bookcase, unless proper ventilation is provided.

# Controls and Basic Instructions

**CONGRATULATIONS** on your purchase of a Polaroid digital photo frame. Please read carefully and follow all instructions in the manual and those marked on the product before first use. Failing to follow these warnings could result in personal injury or damage to the device. Also, remember to keep this User's Manual in a convenient location for future reference.

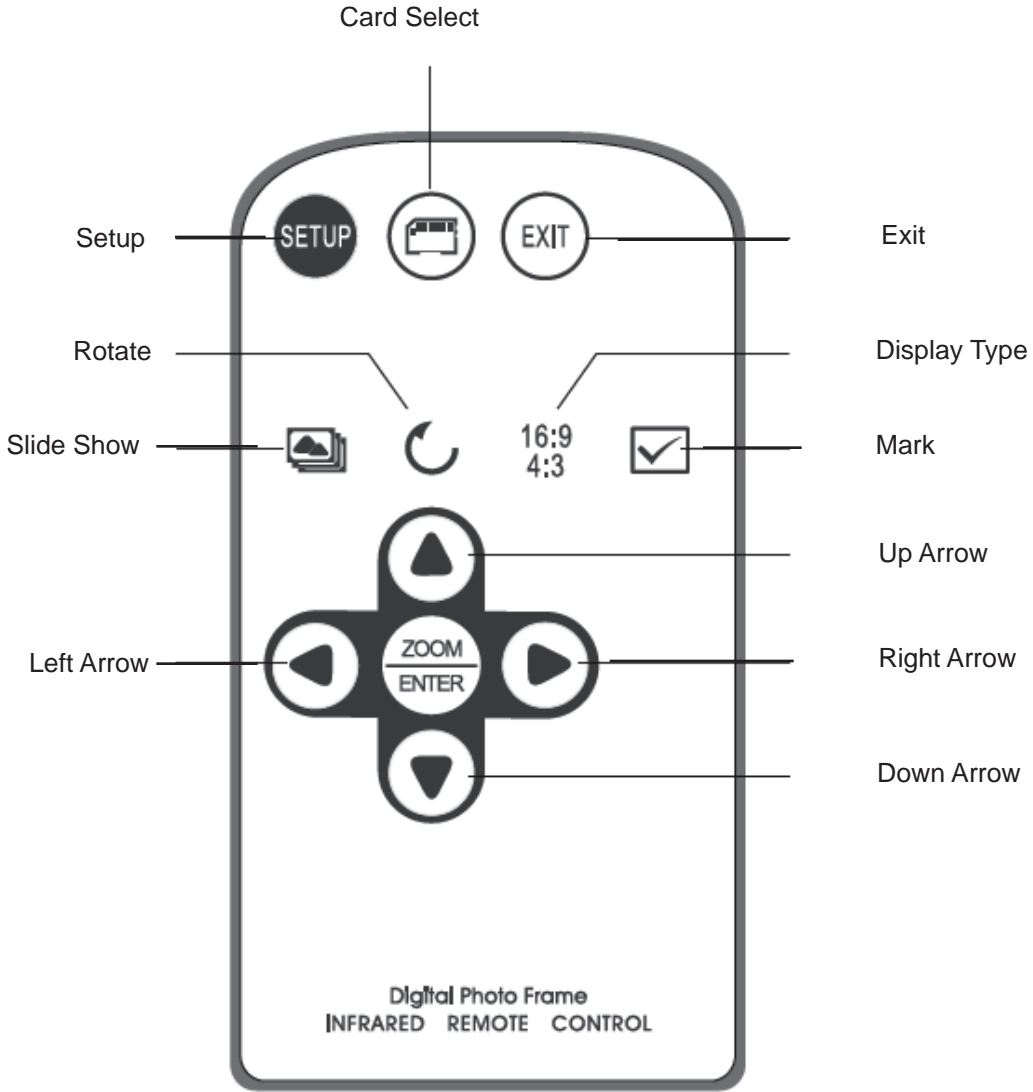
**Important:** Save the original box and all packing material for future shipping needs.

## Controls



# Remote Control

## Remote Control



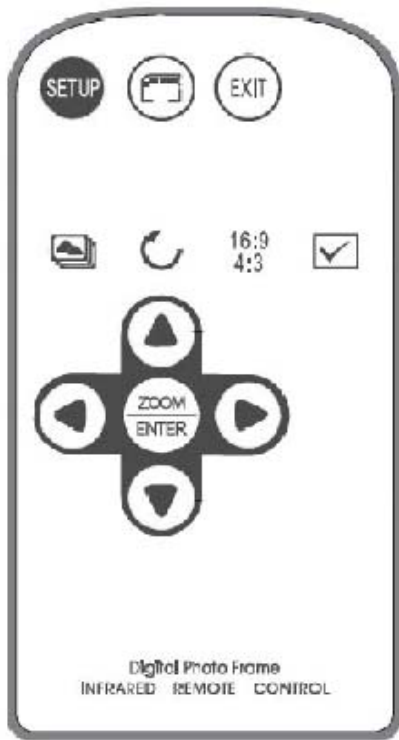
# Quick Start

## Quick Start Instructions

1. Plug the AC adapter into the Digital Photo Picture Frame with Built-in Weather Station and plug it into a wall outlet.
2. Insert a memory card into the slot or inset peripheral USB equipment into USB host:  
Memory Card Slot: Secure Digital™, MultiMedia Card™, Memory Stick™, Memory Stick Duo™
3. Turn on the Power Switch on the back of the Digital Photo Picture Frame.
4. Once the Digital Photo Picture Frame has been turned on, the unit will enter the “Select Card” page automatically.
5. Press the >> or << button to select one type of memory cards and press the Play (▶ II) button to enter “Select Mode” page.
6. Press the >> or << button to select one mode and press the Play (▶ II) button to enter.
7. Or press the EXIT button to back to the “Select Card” page.
8. Follow step 6, press the >> or << button to select one picture and press the Play (▶ II) button to view it in full screen. Then press the >> button to next picture or press the << button to previous picture. Press the EXIT button to exit.
9. When viewing a picture, press the Play (▶ II) button again to enlarge the current picture. Under zoom in state, press the >> button to move to the right side of the picture and press the << button to move to the left side. Press the EXIT button to zoom out the picture to original size.
10. Press the EXIT button for one second to access the on screen display (OSD). Press the >> or << button to choose one item and press the Play (▶ II) button to enter. Press the >> or << button to choose one option and press the Play (▶ II) button to confirm your choice. Press the EXIT button to exit the OSD.

# Controls and Basic Instructions

## Buttons on the Remote Control



**SETUP** button Press to open menu for changing settings.

**CARD SELECTION** button Press to choose a different memory card.

**EXIT** button Hold down for one second to enter the on screen display menu, press again to exit.

**SLIDE SHOW** button Press to start/stop a photo slideshow

**ROTATE** button Press to rotate photos 90 degrees clockwise on screen

**DISPLAY** button Press to change from 4:3 to 16:9 and back

**MARK** button Press to mark your favorite pictures for a slide show

**ZOOM** button Press to zoom up to 4x

**ENTER** button Press to confirm your selection and play still images

↑ button Press to move up when selecting files on your screen.

← button Press to move left when selecting files on your screen.

→ button Press to move right when selecting files on your screen.

↓ button Press to move down when selecting files on your screen.

# Controls and Basic Instructions

## Control Button Functions

All function settings for the Digital Photo Picture Frame can be controlled via the buttons located on the top of the frame. You will be able to access the on screen display (OSD) at any time, except when in Slide Show Mode, by simply holding down the "EXIT" button for one second or press remote control setup button.

OSD Menus	Sub-Menus	Description
Mosaic View	On Off	Watch four pictures at a time in a slide show
Image Size	Original Optimal	Display images in original aspect ratio Optimize images to fill entire space
Slide Show Effect	Off Fade Shutter Cross Comb Mask Brick Dissolve Bar Random	Select style of transition
Slide Show Speed	Fast Normal Slow	Speed of slide show
Slide Show Shuffle	On Off	Picture display order is random in slide show mode
Set Favorite	--	Set favorite pictures as Slide Show
Reset Settings	Are you sure? yes/no	Restore settings to default values
Language	English Italian German French Spanish Portuguese Dutch	Multiple languages
Auto Slide Set	Off 30 Seconds 60 Seconds 5 Minutes 15 Minutes	The slide show will automatically after the selected time.

Note: If a card is inserted into the Digital Picture Frame, selecting "Start Slide Show" will run a Slide Show of images contained in the memory card.

If you select some favorite pictures through "Set Favorite" option, the Slide Show will display your favorite pictures.

# Controls and Basic Instructions

## Control Button Functions - continued

### OSD Functions

Note: To enter the OSD, hold the EXIT button down for one second.  
To exit, simply press the EXIT button.

Note: The OK button has two functions:

- 1: Press it just for a second to confirm your choice
- 2: Press and hold it down for a longer time to enter the slide show mode.

Button	Command
<<	Up
▶ / II	Select
>>	Down
EXIT	Exit OSD Menu

### Viewing Pictures Individually

Button	Command
<<	Previous Picture
▶ / II	Zoom in the Select Picture
>>	Next Picture
EXIT	Press once to zoom out the picture to original size or hold down for one second to enter OSD Menu

### Select Mode Page / Select Card Page

Button	Command
<<	Left
▶ / II	Select
>>	Right
EXIT	Back to "Select Card" Page

## Demo Slide Show

Some demo pictures have been loaded into the digital picture frame. These pictures can be viewed without inserting any memory cards. Power on the digital picture frame, wait for a while, the demo slide show will run automatically.

## Connecting a USB Device to the Digital Picture Frame

Your Digital Picture Frame has a built-in USB port. Using a USB cable (not included) and your digital camera or a USB flash drive, you have the ability to view images directly from the USB source.

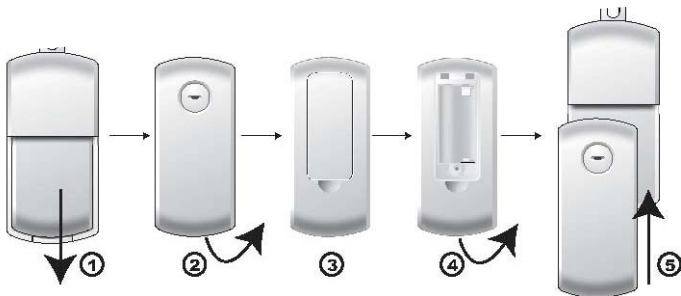
1. Connect the AC adapter to the Digital Picture Frame and slide the power switch to the "on" position.
2. Connect one end of a USB cord to a USB device such as a digital camera or USB flash drive, and the other end to the Digital Frame.
3. Once the Digital Photo Frame has recognized the USB source, you will be able to view all the pictures on the camera's internal memory, its memory card, or a USB flash drive.



# Using The Weather Center

## Battery Installation

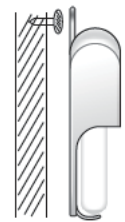
1. Slide the outdoor temperature transmitter from the bracket as illustrated.



2. Reverse the outdoor temperature transmitter.
3. Remove the battery cover.
4. Observe the correct polarity (+/-) and install 2 x AAA batteries. Make sure the batteries are firmly set inside the transmitter or start-up problems may occur. Replace the battery cover.
5. Insert the transmitter into the bracket.

## Outdoor Remote Temperature Transmitter Mounting

The outdoor remote temperature sensor can be hung onto a wall using a screw.

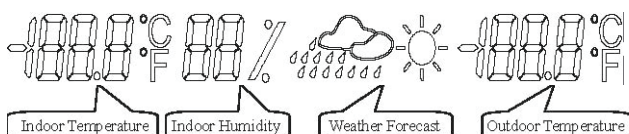


Note:

- 1) The remote temperature transmitter should be placed in a dry, shaded area. The remote temperature sensor has a range of 80 feet (25m). Any walls the signal will have to pass through will reduce the range. An outdoor wall or window will have up to 10 feet of resistance. Your distance plus resistance should not exceed 80 feet in a straight line.
- 2) Fog and mist will not harm your remote temperature sensor but direct rain **MUST** be avoided.

## Weather Center Features:

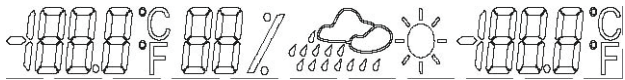
1. Indoor Temperature Display
2. Indoor Humidity Display
3. Outdoor Temperature Display
4. Weather Forecast
5. Celsius(°C) and Fahrenheit (°F) Switching Display



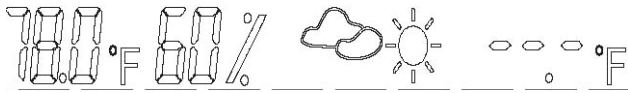
# Using The Weather Center

## Getting Started with Fahrenheit and Celsius

1. Turn the power on the Digital Photo Frame to the “on” position.
2. The LCD screen will display Indoor Temperature, Indoor Humidity, Weather Forecast and Outdoor Temperature for 3 seconds.



3. The built-in weather station will begin to examine the indoor temperature and humidity while scanning the outdoor wireless signal. During this, the temperature will be displayed either as “—.—.°C” or “—.—.°F”.



4. After receiving the data, the LCD will display the outdoor temperature.



## Indoor Temperature

- The LCD will display temperatures from 32° ~ 122° Fahrenheit (0 ~ 50°Celsius)

## Indoor Humidity

- The LCD will display humidity from \_0% ~ 99%

## Outdoor Temperature

- The LCD can display temperature from -58° ~ 158° Fahrenheit (- 50 ~ 70°Celsius)
- It takes 30 seconds to two minutes, varying with temperature fluctuation, to acquire accurate information

## Weather Forecast

- When fully powered on, it will take the built-in weather station 4 to 8 hours to collect and analyze the atmosphere to report Weather Forecast which is valid for 24 hours.
- Weather forecast is for reference only and may vary with actual weather.

# Troubleshooting and FAQ

## Troubleshooting

Q: I powered up the built-in weather station for about 3 minutes, but the outdoor temperature does not display.

A: Normally, outdoor temperature is sensed after the built-in weather station is powered on for 3 minutes. The problem may be:

- 1) The emitter is too far from the receiver's indoor location.
- 2) There are more than one or two barriers between the emitter and receiver.
- 3) The battery in the emitter is low.
- 4) There is strong interference in the wireless signal. If the LCD still doesn't display the outdoor temperature, power off the built-in weather station and restart.

Q: The LCD is faint.

A:

- 1) Remove all batteries, reinsert into remote temperature sensor first, and then into the indoor temperature station.
- 2) Place remote temperature sensor closer to the indoor temperature station.
- 3) Be sure all batteries are new.
- 4) Place remote temperature sensor and indoor temperature station so the straight-line signal is not passing through more than two or three walls.

## Frequently Asked Questions (FAQ)

Q: What other media formats can the Digital Photo Picture Frame support? Why will it not play all images?

A: The Digital Photo Picture Frame will support JPEGs taken from a digital camera. The Digital Photo Picture Frame may not read all images.

Q: I have a memory card in the Digital Picture Frame, but it's not reading the card. What should I do?

A: First, make sure that you are using a memory card that is supported by the Digital Picture Frame.

Second, ensure the memory card is inserted all the way into the correct slot.

Third, press the EXIT button until you reach the "Select Card" page. If the memory card is properly inserted into the slot, the memory card icon will be highlighted.

Note: Some digital cameras save images into non-standard formats. Please refer to your camera's operating manual for specifics.

Q: Why do some pictures load faster than others?

A: Higher resolution pictures load slower. Using a lower resolution when taking pictures speeds loading time.

# Technical Specifications and Recycling

## Technical Specifications

Product: 7" LCD Screen Digital Photo Picture Frame with Built-in Weather Station  
Resolution: 480 x 234 pixels  
Input Formats: Secure Digital™, Multi Media Card™, Memory Stick™, Memory Stick Pro Duo™

## FCC Disclaimer

The outdoor remote temperature sensor complies with part 15 of the FCC rules. Operation is subject to the following two conditions: (1) this device may not cause harmful interference, and (2) this device must accept any interference received, including interference that may cause undesired operation.



**RoHS**

### WEEE:

This product contains electrical or electronic materials. The presence of these materials may, if not disposed of properly, have potential adverse effects on the environment and human health. Presence of this label on the product means it should not be disposed of as unsorted waste and must be collected separately. As a consumer, you are responsible for ensuring that this product is disposed of properly. To find out how to properly dispose of this product, please go to [www.polaroid.com](http://www.polaroid.com) and click on "Company" or call the customer service number for your country listed in the instruction manual.

"Polaroid" and "Polaroid and Pixel" are trademarks of Polaroid Corporation.

For service, support and warranty information, visit [www.polaroid.com](http://www.polaroid.com).